



**wallflower**  
 Opting for a wall-mount faucet, instead of a deck-mount, frees counter space for a bigger basin.

# Patience makes perfect.

**OPPOSITE:** A pass-through to the family room borrows light and creates continuity between living areas. The cherry cabinets include many features typical of Arts and Crafts style: glass-fronted uppers, arched details beneath, and hammered-copper pulls. **ABOVE:** Handmade, embossed tiles bring a hint of nature into the kitchen, while a handy pot-filler faucet over the range simplifies cooking. **ABOVE RIGHT:** A wall-mount faucet adds vintage character and frees counter space for a large stainless-steel sink. A shelf above provides a display area for collectibles.

That, in a nutshell, is the story of Gwenn Vittimberga's kitchen, a study in earth tones, geometry, and, above all, craftsmanship, 20 years in the making.

Not that it took that long to create. The kitchen, Gwenn notes, is but a small slice of the house that she and her husband, Victor Pricolo, built in 2006 in Barrington, Rhode Island. Decidedly Arts and Crafts, the home is the culmination of Gwenn's decades-old affair with a style she first discovered in her twenties. "I'd been reading books and dog-eared pages and traveling around and looking at houses for years,"

| FAST FACTS                            |  |
|---------------------------------------|--|
| <b>LOCATION:</b> Barrington, RI       | <b>FUN FACT:</b> The homeowners have collected Art Deco pieces for more than 20 years. |
| <b>HOME STYLE:</b> Arts and Crafts    |  |
| <b>KITCHEN STYLE:</b> Arts and Crafts |  |

she says. "I definitely knew what I liked. The wood, the wainscoting, the greens and browns and the other colors you'd find in nature,

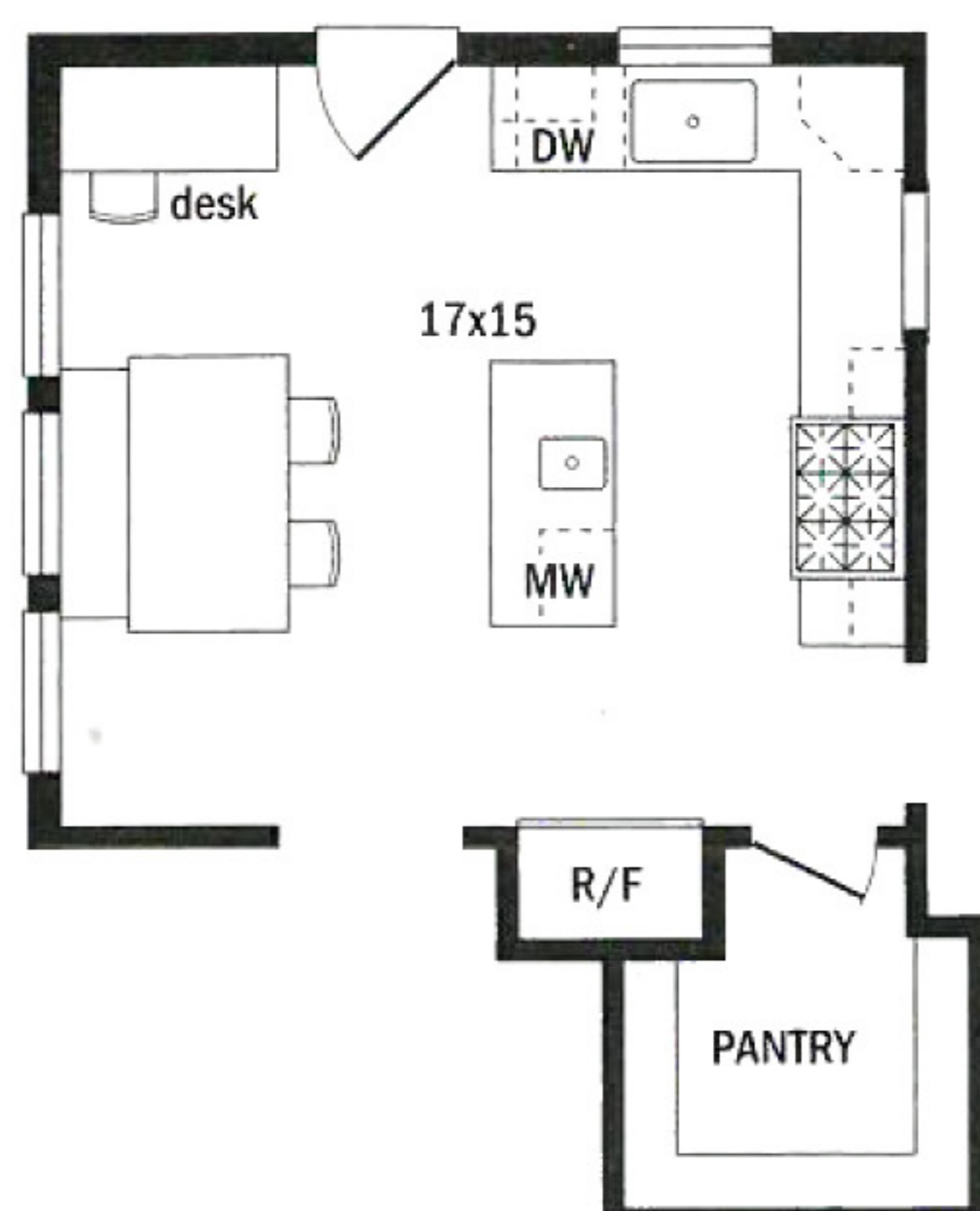
the handmade look, and the simple lines." It was a tall order, she recalls, but doable, and in the end she got what she wanted. "The house has that small, California bungalow feel, which I love, but it's also big enough to be comfortable."

*view catcher*  
Connect an interior kitchen to other living areas with pass-throughs that allow light—and conversations—to cross rooms.





**OPPOSITE:** A wide lane between the island and the eating area offers easy access to the three-season porch and makes the room feel bigger than it is. **ABOVE:** The island prep sink frees the main sink for cleanup duty. The gently arched support brackets provide balance in a kitchen dominated by straight lines. **ABOVE RIGHT:** The island's microwave is just a heel-turn from the range, creating a compact cooking zone. Pendant lights above the island ensure the prep space is well lit.



The same can be said for the kitchen, where evidence of the couple's two children—a desk area with drawings and schedules, a big oak table often covered in board games—blends easily in a room that is clearly designed to be used. “We do a lot of cooking,” Gwenn says. “We’re in here all the time.” A wall of exterior windows lends light to the space from one side of the room, while opposite, above the honed-granite countertops, a simple, old-style pass-through provides a useful link to the family room. “When I’m standing at the sink, I can look in there and see the kids doing their homework,” Gwenn says. “It opens things up, but at the same time, if I want to listen to music while I’m doing dishes, I’m not going to bother them.”

The kitchen, says project designer Tricia Hogue, is a soothing mix of patterns, colors, and materials all intended to convey a sense of home. “There’s this simple, subtle, rectilinear feel, with a few graceful curves. Everything about it—the windows, the cabinets, the handmade tile—is meant to put you at ease.”

That, of course, is just one side of the coin. The other is the room's pure function. “This is very much a working kitchen,” Hogue says. “It’s not huge, but it’s efficient.” Toward that end, a prep sink on the island is just a chef’s spin away from the six-burner range. Ample countertops provide terrain for mixing and chopping. All appliances are stainless steel. Storage is abundant. And that table by the windows? When it’s not being used for Scrabble, it’s all about convenience. “It’s all-purpose,” Gwenn says. “It’s where we gather. It’s where we eat our meals when we don’t have company.” The table, she notes, “came with us when we moved.” She’d had it for years, and now, here, it finally has a home. **KBI**

RESOURCES BEGIN ON PAGE 132.



**workhorse**  
Outfitting a 4-foot stretch of wall with kitchen-matching cabinetry makes a built-in desk a stylish, space-saving office solution.

## TAKEAWAYS

- 1 Pass-throughs connect the kitchen to other areas of the home.
- 2 Warm wood with arched details showcases Arts and Crafts style.
- 3 In-kitchen dining provides a spot for the kids to hang out.
- 4 A microwave in the island consolidates all the cooking appliances in an efficient work zone.



### 44-45 Fit for Company

**Designers**—Cheryl Kees Clendenon, Laura Cathings Lawrence, CKD, In Detail Kitchen & Bath, NKBA, NARI, 850/437-0636, [indetailkitchenandbath.com](http://indetailkitchenandbath.com). **Tub** Basa—BainUltra, 800/463-2187, [bainultra.com](http://bainultra.com). **Shower, sink fixtures** in weathered copper—California Faucets, 800/822-8855, [calfaucets.com](http://calfaucets.com). **Sinks** Zen in black—Stone Forest, 888/682-2987, [stoneforest.com](http://stoneforest.com). **Toilet** Clayton—Toto USA, Inc., 800/350-8686, [totousa.com](http://totousa.com). **Cabinetry** custom, **countertops** granite in Absolute Black, **window treatment, shower curtain**—In Detail Kitchen & Bath, NKBA, NARI, 850/437-0636, [indetailkitchenandbath.com](http://indetailkitchenandbath.com). **Flooring, shower walls** limestone—Moza Tile, 850/437-9090, [mozatile.com](http://mozatile.com). **Lighting: sconce**—Hubbardton Forge, 802/468-3090, [vtforge.com](http://vtforge.com); **pendant**—Urban Objects, 850/912-8683.



### 54-59 Love at Last

**Architectural design**—Watermark Coastal Homes, LLC, 843/379-3222. **Cabinetry** custom maple in Latte, wine cabinet and range hood in Coffee Bean—Wilmington Cabinet Co., 912/239-9914. **Cabinetry hardware**—Top Knobs USA, Inc., 800/499-9095, [topknobsusa.com](http://topknobsusa.com). **Countertops** granite in St. Cecilia; **backsplash decorative border** travertine—check with a local supplier. **Backsplash field tile** Venezia in Classico Antique, **decorative tile** Cote d'Or in Melange Rouge—Walker Zanger, 877/611-0199, [walkerzanger.com](http://walkerzanger.com). **Sink**—Blanco America, Inc., 800/451-5782, [blancoamerica.com](http://blancoamerica.com). **Floor rug, dining chandelier**—Past & Presents, 901/853-6454, [pastandpresentsonline.com](http://pastandpresentsonline.com). **Lighting: pendants over counter**—The Light Post, 843/815-8080, [thelightpost.com](http://thelightpost.com); **table lamps, brackets**—M Design, 843/524-7465. **Paint: walls** Believable Buff, **ceiling** Dover White—The Sherwin-Williams Co., 800/474-3794, [sherwin-williams.com](http://sherwin-williams.com) [P]. **Counter chairs, clock**—Ballard Designs, 800/367-2775, [ballarddesigns.com](http://ballarddesigns.com). **Dining table cloth** custom in Burlap—GDC Home Interiors, 843/849-0711, [gdchome.com](http://gdchome.com). **Chairs**—Haverty's, 843/837-5500, [havertys.com](http://havertys.com). **Slipcover fabric**—Rogers & Goffigan Ltd., 203/532-8068 [T].



### 60-65 Worth the Wait

**Architects**—Barbara J. Thornton, AIA, Mary Dorsey Brewster, AIA, Brewster Thornton Group Architects LLP, 401/861-1600, [brewstorthornton.com](http://brewstorthornton.com). **Builder/contractor**—Doug Brownlow, Brownlow Assoc., Inc., 401/247-2255, [brownlowassociates.com](http://brownlowassociates.com). **Interior design**—Tricia Hogue, Jessie Dell, Scarborough-Phillips Design, Inc., 401/615-7761, [scarboroughphillips.com](http://scarboroughphillips.com). **Range**—Wolf Appliance, Inc., 800/332-9513, [wolfappliance.com](http://wolfappliance.com). **Vent hood**—Thermador, 800/735-4328, [thermador.com](http://thermador.com). **Refrigerator**—Sub-Zero, Inc., 800/222-7820, [subzero.com](http://subzero.com). **Dishwasher drawers**—Fisher & Paykel Appliances, Inc., 888/936-7872, [usa.fisherpaykel.com](http://usa.fisherpaykel.com). **Cabinetry** Design Group 42 with Chatham doors in cherry with custom glaze and stain—Wood-Mode, Inc., 877/635-7500, [wood-mode.com](http://wood-mode.com). **Drawer pulls**—Restoration Hardware, 800/910-9836, [restorationhardware.com](http://restorationhardware.com). **Countertops** granite—check with a local supplier. **Backsplash tile**—Trikeen Tileworks, 603/355-2961, [trikeenan.com](http://trikeenan.com). **Sinks: main**—Whitehaus Collection, 800/527-6690, [whitehauscollection.com](http://whitehauscollection.com); **island**—Franke Kitchen Systems Division; 800/626-5771; [franeksd.com](http://franeksd.com). **Faucets** Perrin & Rowe—Rohl, 800/777-9762, [rohlhome.com](http://rohlhome.com). **Flooring** Red Oak—check with a local supplier. **Windows**—Loewen Windows, 800/563-9367, [loewen.com](http://loewen.com). **Fruit stand**—Crate & Barrel, 800/967-6696, [crateandbarrel.com](http://crateandbarrel.com). **Lined basked**—Wish Basket, 978/465-1515.

For the best service,  
selection and value,  
go to the source...  
**BRANDSOURCE.**



**BRANDSOURCE®** has everything you need to make your house a home: Top name Appliances, Electronics, Bedding, Furniture, Kitchen and Bath Fixtures and much more!

**visit:**  
**bestvalue.brandsource.com**  
for store locations and  
special offers

